

Welcome to Kalona



There are a number of ways large groups of 12 or more can tour Kalona and learn about the local Amish Community with advance reservations made at least 2 weeks in advance.*

For Groups with Limited Time or Budgets, Try One of These Options!

Countryside Tour with Step On Guide

Travel the scenic back roads in your bus with our step-on guide as you discover the world of the Kalona businesses or the Amish who continue to live the simple, wholesome lives of our pioneers. You'll see their homes, schools, and farms as you learn about their fascinating traditions and customs. Select 2 destinations to fit your groups interests. Each stop takes approx. 1 hour.

See Our List of Destinations Inside

Adults: \$15.00 + Mandatory Tip for Guide (\$2.00) = \$17.00 Min 12 Adults. NO MEAL.



Delicious Family Style Meal with Program

Experience a culinary adventure in a country setting, a meal served family style in a Mennonite home. From home-baked bread to fresh fruit pies, we ensure you never leave hungry. A program about the Amish and Mennonite way of life will accompany your meal.

See Our Sample Menu Inside

Adults: \$24.00 + Mandatory Tip for Cook & Guide (\$4) = \$28.00 Min 12 Adults. NO STOPS.

PLEASE NOTE THESE RULES & RESTRICTIONS:

1. A minimum of 12 paid adults in your group are required to reserve a date.
2. Reservations must be made at least 2 weeks prior to the date you wish to tour. Payment in full required 2 weeks prior to tour at the time a final head count is provided.
3. The mode of transportation you bring to Kalona is the method of travel you will use to tour. We do not provide transportation.
4. We reserve the right to cancel any tour for any reason out of our control.
5. We encourage you to select the destinations you would prefer to visit, but almost all are family operated and as such may not be available on the date you select.

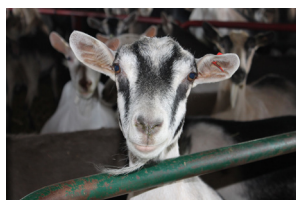
**Educational Student
Tours Also Available**

**Curriculum can be
adjusted to suit your
individual needs**

Kalona Historical Society Tours

Complete List of Destinations:

*KHS Exclusive
 \$\$ - items for purchase



Amish Dairy Goat Farm - Discover the local dairy goat industry at this Amish farm, which milks an average 200 goats twice daily. Learn about the feeding regimens and what equipment their religion allows them to utilize.

Amish Field Operation - Visit an Amish farmstead, and discover the exhausting work day of the Amish farmer. Curry the horses, or pet the barn cats. Step into a buggy and envision riding the country lanes. Examine the steel wheeled machinery and discover the Amish way of life.



Bunker Mill Bridge Historic Site - An 1887 King iron pratt through truss bridge crosses the English River at the site of the former grist mill that serviced area farmers in 1800s. The mill burned in 1899 and the bridge in 2013, but was restored. Your guide explains the historical importance of the site. \$\$

Community Country Store - Amish Country general stores specializes in kitchen and household goods, like your grandparents used, and still used by Amish today. We will select the shop best suited to your size and form of transport. Closed Tues \$\$



Conservative Mennonite Program - Learn the basic beliefs of the Mennonite faith, and the changes it has undergone since its origin in 16th Century Europe. The speaker will be happy to answer your questions. * **KHS Exclusive**

Creekside Ebikes - Discover the latest fad in the area - electric bikes. New order youth have embraced this eco-friendly method of traveling & our guide will explain why. \$\$ * **KHS Exclusive**



Farmers Hen House - Witness the daily collection of eggs, learn about the care given to layers, and contemplate the economic importance of egg money to the multi-generational Amish family vs large conglomerate operations.



Golden Delight Bakery - Discover the workings of this popular Amish bakery, where everything is made from scratch in the way our grandparents. \$\$

JK Creative Wood & Gifts - Every one of the Brokaws gets involved in this family owned woodworking operation. The distinctive pieced designs, created with solid kiln-dried wood, is painstakingly produced so each is a unique creation. Observe the creative process. Shop also showcases Amish quilts, custom furniture, pottery, glass, jewelry and other handmade gifts. \$\$



Kalona Brewing Company - Discover the methodology behind the making of Kalona's newest libation - authentic craft beer. The brewery is home to a 15 barrel brewing system, which includes a 3 vessel brew house, fermenters, bright tanks and a canning line. Your tour end with a sampling of heavenly beers, brewed by mere mortals. \$\$

Kalona Buggy Shop - Discover what goes into the construction of a custom created Amish buggy, built by hand at this Amish family operation. If you wish, you may place your own order, but plan to wait a year for its delivery. **KHS Exclusive**



Kalona Chocolates - Get a sneak peak at the Hersherberger family operation, as these delectable handmade confections are created right before your eyes. \$\$

Kalona Creamery - Previously known worldwide as the Kalona Cheese Haus, this locally owned dairy has been modernized and now gives local farmers a novel option for their milk. Visitors tour the plant and learn about the fresh products, including organic and Non-GMO, being processed daily. \$\$



Kalona Noodles - Watch as this local favorite is created, and see for yourself the fresh goodness of hand made noodles. \$\$

Kalona Historical Village - Relive the 1800's when you visit authentically restored buildings, lovingly preserved and filled with interesting and informative displays depicting the lifestyle of the early Iowa pioneer. \$\$



Max-Cast Sculpture Foundry - Founded in 1983 by artists, Steve Maxon & Doris Park, Max-Cast is a full-service foundry, casting in bronze, iron, and aluminum. Your guide explains the unique steps and different processes used in the metal casting of fine art sculptures.



Kalona Quilt & Textile Museum - The museum features galleries for both Amish and English (non-Amish) quilts, showcasing quilt history of the midwest and beyond. New exhibits are installed quarterly in a variety of themes, so if you have visited in the past, chances are you will discover something new. \$\$

Kalona Sale Barn - Depending upon the day, your tour will encompass the procedures necessary to operate a livestock auction and may witness the sale of a variety of livestock at this 4th generation family owned auction house.

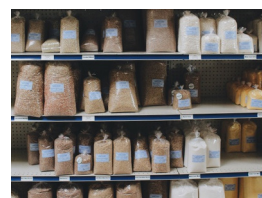


Local Fabric Shops - Especially for quilt groups, we can stop at several of the local fabric shops, both English and Amish, where you can pick up tips from the experts, and view demonstrations.



groups of 15 or less \$\$

Old Mans Creek Winery - Tour the newest local vineyard and if age appropriate, sample some of their Iowa wines at this scenic family owned winery north west of Kalona. This venue can only accommodate



Stringtown Grocery & Produce - This famous Amish bulk food grocery is a favorite of locals, and a landmark for visitors interested in ingredients for baking and snacking. It recently opened a produce department to the north, and a cold room for organically grown meats and products grown & made locally. \$\$

While we offer this listing, many of these sites are family operated and may or may not be able to accommodate your group on any particular day. The more flexible you are, the more likely we can meet your expectations.

Menus for the Home Cooked Family Style Meals

All meals are served family style, which means you are served large bowls and platters of your menu, and you spoon the size of portion you are comfortable with onto your personal plate. If the bowl is emptied, the cook sees to it that you never leave hungry.

Groups reserving the noon and evening meals are allowed the selection of one meat:

Roast Beef - Turkey - Roast Pork - Ham - Chicken

The rest of the meal consists of

Choice of dressing or noodles

Choice of potato (mashed or fried) with gravy

Choice of Vegetable - Green Beans, Peas, Lima Beans, Mixed Vegetables or Corn

Choice of Lettuce or Cabbage (ColeSlaw) Salad

Tapioca salad & home-baked bread.

Choice of dessert - homemade pies or angelfood cake & fruit topping

Everyone gets their choice of drink: water, iced tea or coffee

Groups reserving morning or brunch receive the breakfast menu, which consists of a lavish sampling of fresh-baked pastries, fruits, scrambled eggs, ham or sausage, fried potatoes, fruit, tapioca, juice, coffee or tea.



Please alert us if anyone has allergies or dietary restrictions our cooks need to accommodate.



For the Ultimate Kalona Experience, Try One of These Tours!

Two Hour Countryside Tour & Family Style Meal

Select 2 destinations and our step on guide will give you an enjoyable tour, offering interesting and informative dialogue about any of the locations you choose. (Approx 1 hour / stop) Then return to a Mennonite home for a home cooked family style meal, sure to delight your taste buds. Meal takes 1 hr.

See Destinations & Menu Inside

Adults: \$35.00 + Mandatory Tip for Cook & Guide (\$5) = \$40.00

Min of 12 Adults to reserve date.

Larger groups may require more time for loading / unloading per stop.



Full Day Tour & Family Style Meal

Start your day at the Village welcome center with Coffee and Strudel. Then visit your choice of three or four destinations in the Kalona countryside.* Our step on guide will direct your bus to the locations you select, offering interesting insights as you travel and tour. Then return to a Mennonite home for a delicious family style meal, complete with dessert. Tour and meal take approximately 5.5 hours.

See Destinations & Menu Inside

Adults: \$44.00 + Mandatory Tip for Cook & Guide (\$6) = \$50.00

Min of 12 Adults to reserve date. *Larger groups may be limited to 3 stops as they require more time for loading / unloading per stop.



Welcome Center

715 D Ave, Kalona, IA 52247

319-656-3232

kalonatours@gmail.com

kalonaiowa.org

